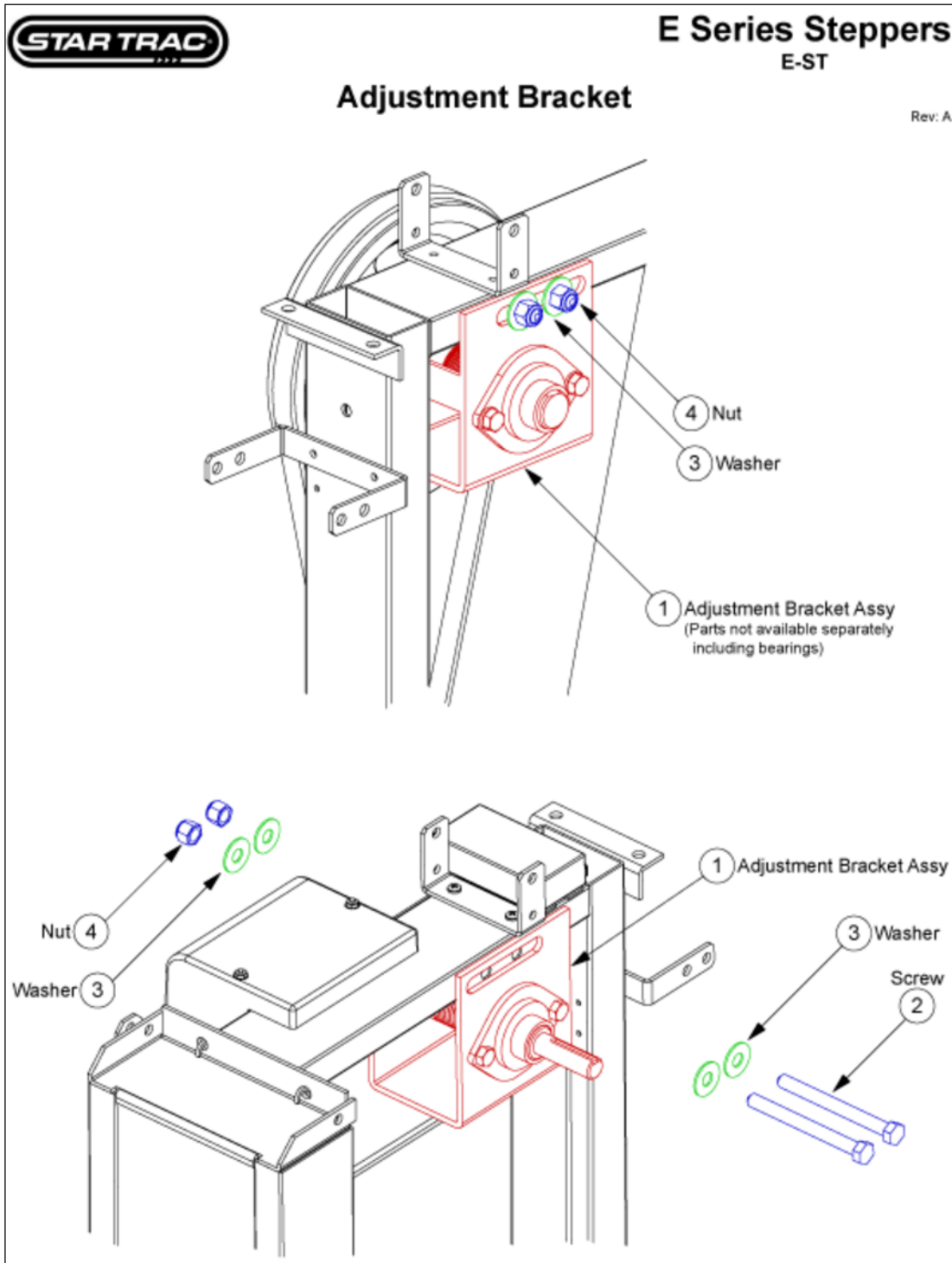


CARDIO • Stepper • E Series Stepper • E-ST

Adjustment Bracket



Slide: 1-4-19-45 • PD ID: 1046 • PROD Link ID: 380 • D ID: 237

October 21, 2009

Adjustment Bracket

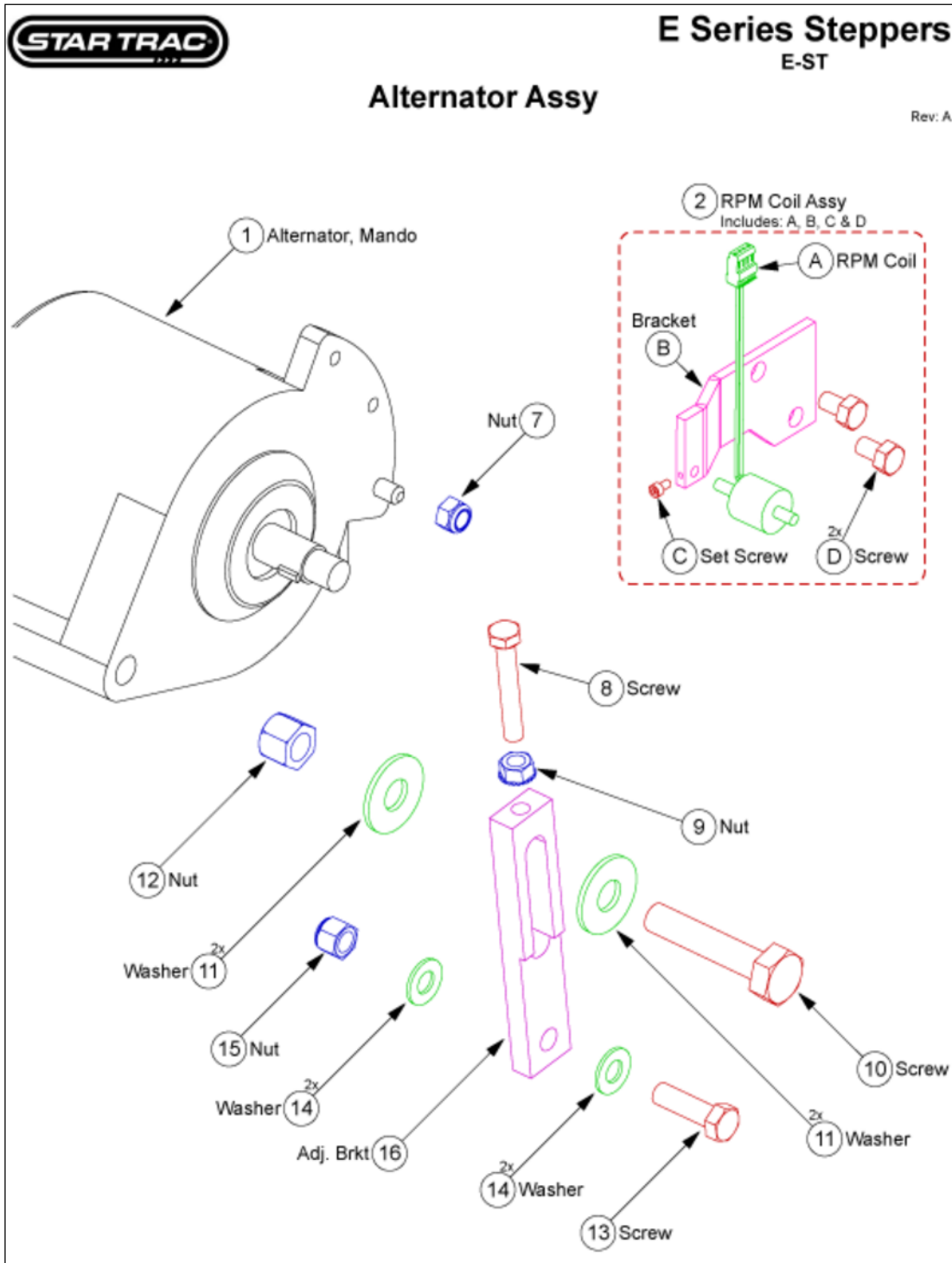
Callout	Part Number:	Description
1	800-3140	BRKT, ADJ ASSY
2	110-0601	SCREW, 3/8-16X4.0" HHCS
3	120-0463	WASHER, 3/8X1.0" FLAT
4	110-1833	NUT, 1/2-13 HEX, NYLOC

Parts are subject to availability. Part pricing may change with or without notice.
Check the Star Trac Support Website <http://support.startrac.com> for current part pricing.

October 21, 2009

CARDIO • Stepper • E Series Stepper • E-ST

Alternator Assy



Slide: 1-4-19-45 • PD ID: 1046 • PROD Link ID: 381 • D ID: 238

October 21, 2009

Alternator Assy

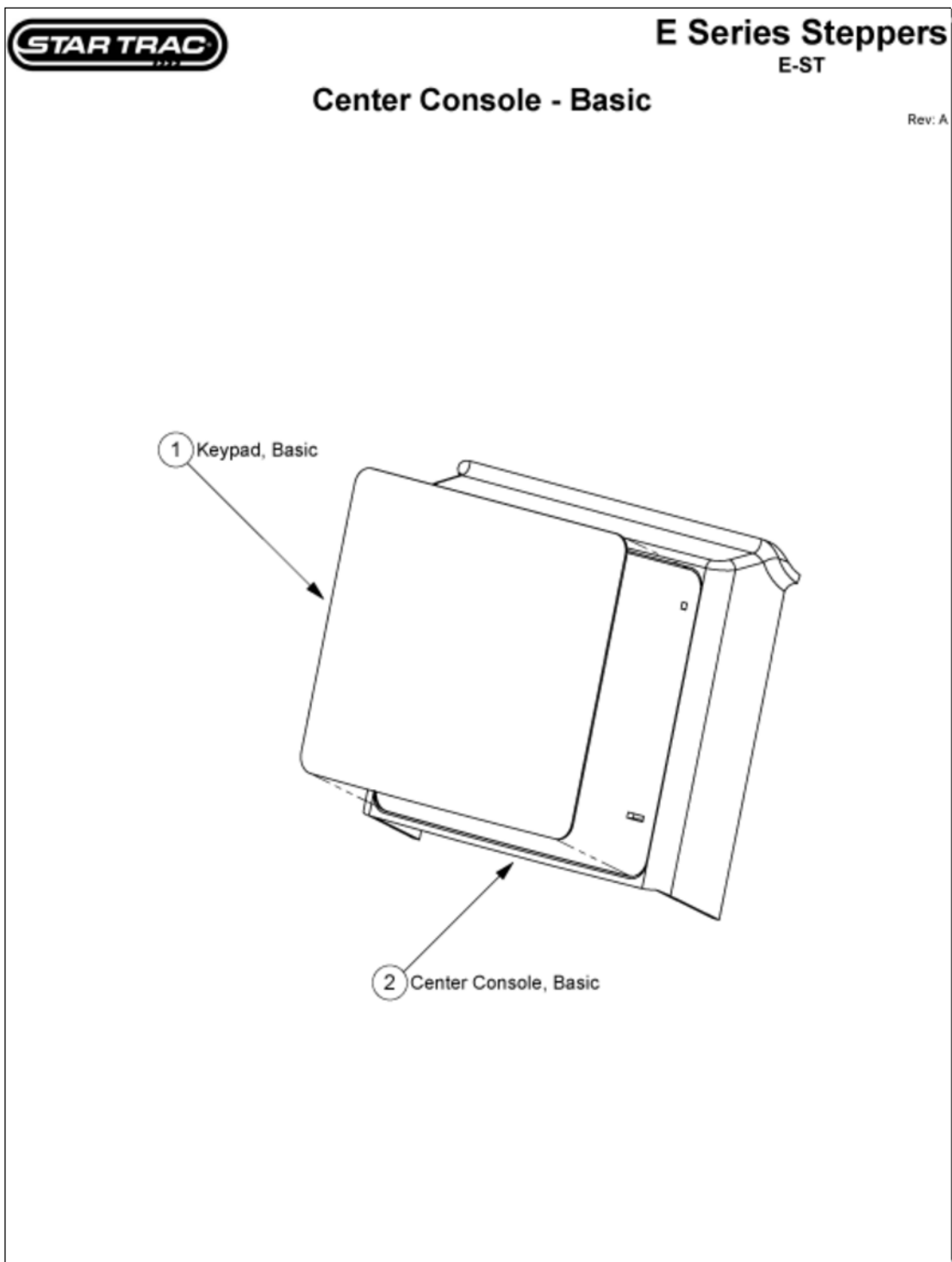
Callout	Part Number:	Description
1	800-3122	ALT, MANDO, RAW
2	800-3104	RPM SENSOR, COIL W/CABLE
7	110-1871	NUT, 5/16-18
8	110-0686	BOLT, 5/16-18X2.0" HHCS ALL THD
9	110-1870	NUT, 5/16-18
10	110-0610	BOLT, 1/2-13X2.5" HHCS
11	120-0462	WASHER, 1/2" FLAT
12	110-1833	NUT, 1/2-13 HEX, NYLOC
13	110-1530	BOLT, 3/8-16X1.25"
14	120-0460	WASHER, 3/8" LOCK
15	110-1830	NUT, 3/8-16 HEX, NYLOC
16	020-0021	BRKT, ADJ, ALT

Parts are subject to availability. Part pricing may change with or without notice.
Check the Star Trac Support Website <http://support.startrac.com> for current part pricing.

October 21, 2009

CARDIO • Stepper • E Series Stepper • E-ST

Center Console Basic



Center Console Basic

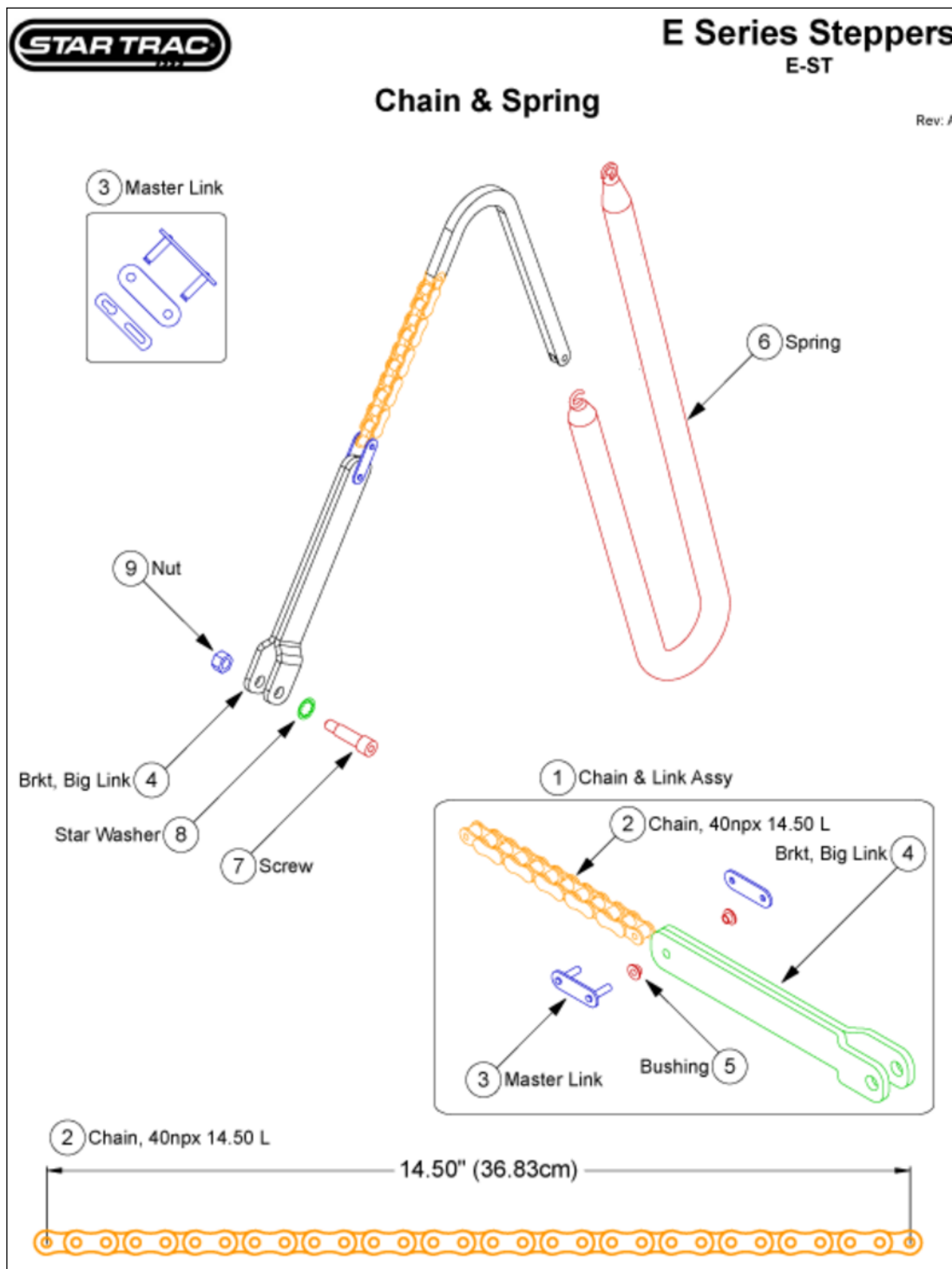
Callout Part Number:	Description
1 050-2028	KEYPAD, CC, BCS, BASIC
2 020-7057	HOUSING, VLAD, BCS, SIMPLE

Parts are subject to availability. Part pricing may change with or without notice.
Check the Star Trac Support Website <http://support.startrac.com> for current part pricing.

October 21, 2009

CARDIO • Stepper • E Series Stepper • E-ST

Chain & Spring



Slide: 1-4-19-45 • PD ID: 1046 • PROD Link ID: 383 • D ID: 240

October 21, 2009

Chain & Spring

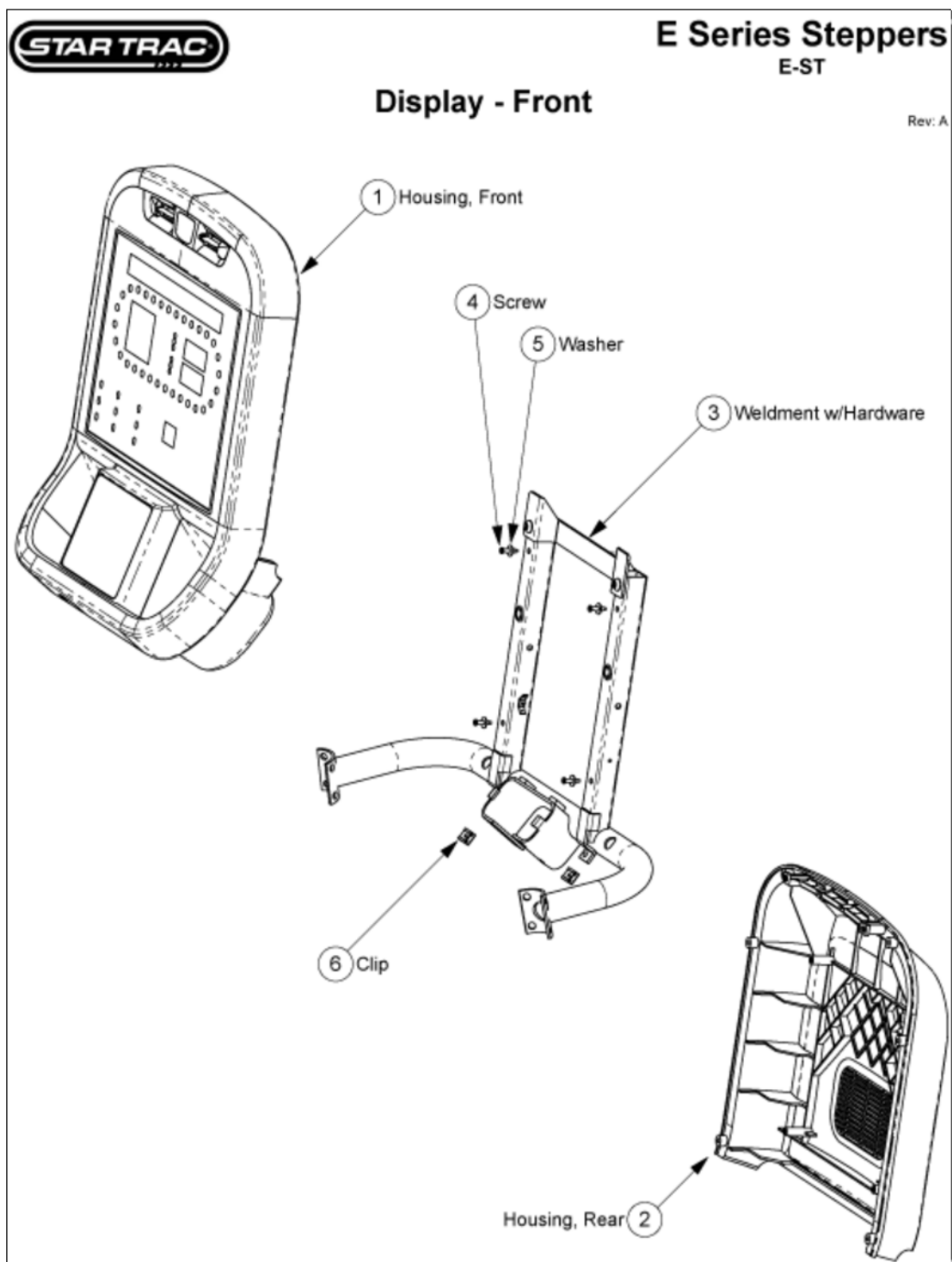
Callout	Part Number:	Description
1	711-3170-KT	KIT, ASSY, CHAIN LINK, STEPPER
2	130-1641	CHAIN, 14.5" NO MSTR LNK
3	130-1543	CONNECTING LINK, #40X1.0" PITCH
4	020-6810	WELDMENT, CONN,CHAIN,STEPPER
5	130-1636	BEARING, 4MMIDX4MML,W/FL, IGLIDE
6	140-3332	SPRING, .11 WIRE X 23.6L, 2.35
7	110-3088	BOLT, 3/8X1.0" SHOULDER
8	120-3013	WASHER, 3/8 LOCK INT
9	110-3089	NUT, 5/16-18 KEP, BLK

Parts are subject to availability. Part pricing may change with or without notice.
Check the Star Trac Support Website <http://support.startrac.com> for current part pricing.

October 21, 2009

CARDIO • Stepper • E Series Stepper • E-ST

Display Front



Display Front

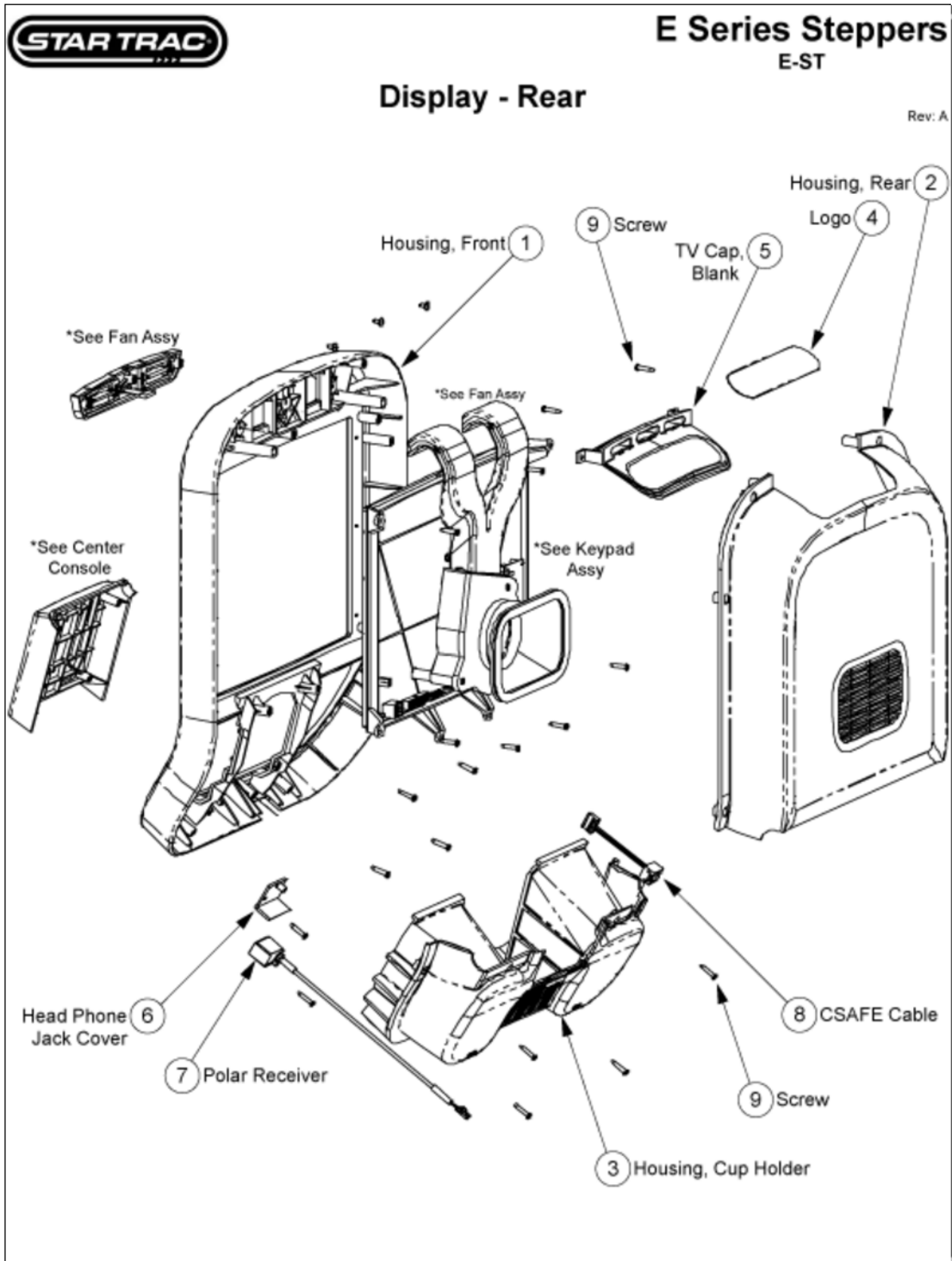
Callout Part Number:	Description
1 718-5101	FRONT PLASTIC, W/IMD, VLAD BCS
2 020-7053	PLASTIC, REAR TOP, VLAD, BCS
3 711-3208	ASSY, DISP. WELD. W/HARDWARE,
4 110-3402	SCREW, M4X0.7X19L, PHT, PH, CS
5 120-3309	WASHER, M12
6 140-3323	U-NUT, #8, PANEL .025-.125

Parts are subject to availability. Part pricing may change with or without notice.
Check the Star Trac Support Website <http://support.startrac.com> for current part pricing.

October 21, 2009

CARDIO • Stepper • E Series Stepper • E-ST

Display
Rear



Display Rear

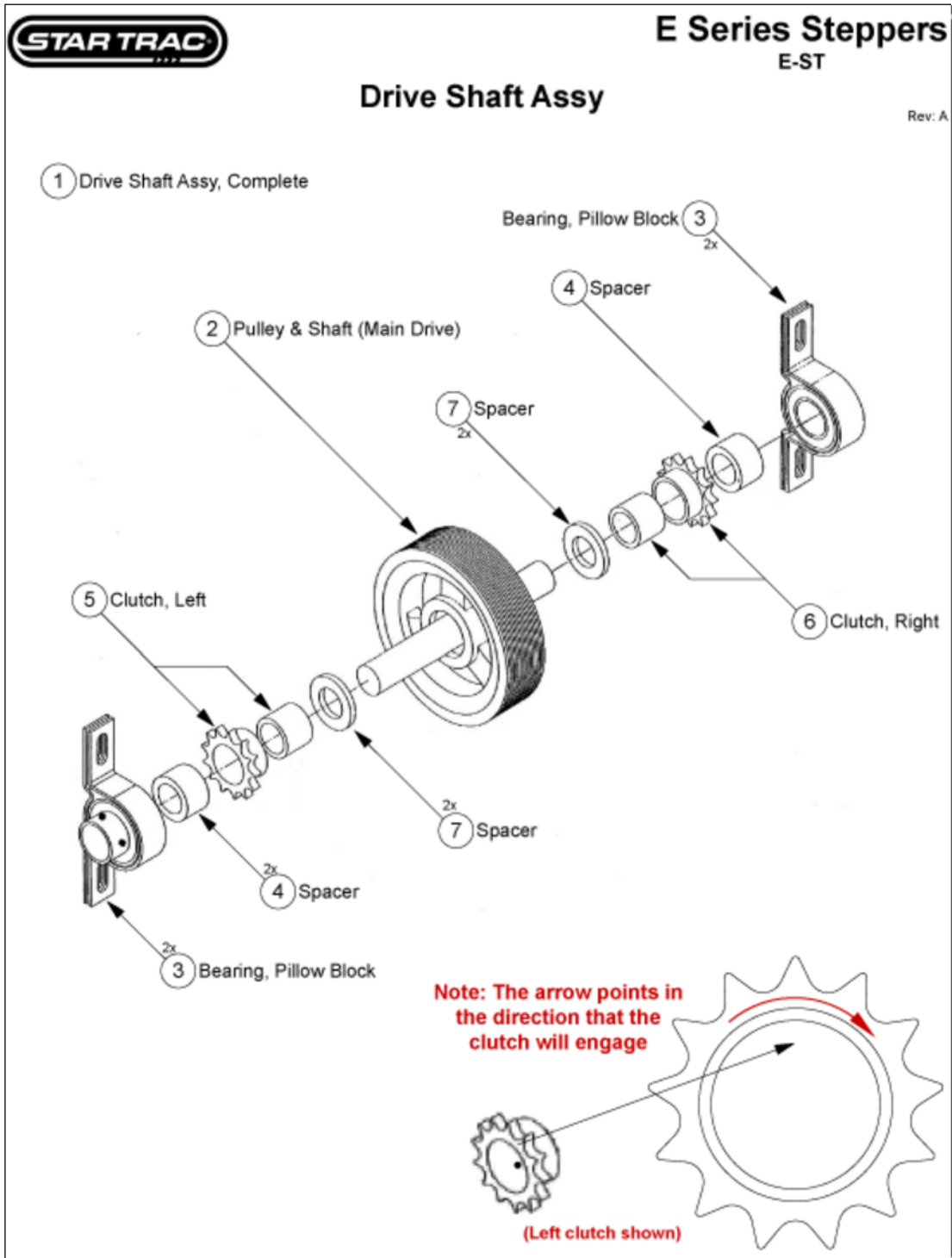
Callout	Part Number:	Description
1	718-5101	FRONT PLASTIC, W/IMD, VLAD BCS
2	020-7053	PLASTIC, REAR TOP, VLAD, BCS
3	020-7054	ASSY, COVER, BOTTOM, BSC, CUP
4	050-2041	LOGO, STARTRAC, VLAD
5	020-7058	PLASTIC, TV CAP, BLANK, BCS
6	020-7094	HEADPHONE, JACK BRKT, PLUG
7	715-3518-KT	KIT, CABLE, POLAR RECEIVER,PRO
8	721-0033	PHONE JACK ASSY, C-SAFE, NR-BK
9	110-3402	SCREW, M4X0.7X19L, PHT, PH, CS

Parts are subject to availability. Part pricing may change with or without notice.
Check the Star Trac Support Website <http://support.startrac.com> for current part pricing.

October 21, 2009

CARDIO • Stepper • E Series Stepper • E-ST

Drive Shaft Assy



Slide: 1-4-19-45 • PD ID: 1046 • PROD Link ID: 386 • D ID: 243

October 21, 2009

Drive Shaft Assy

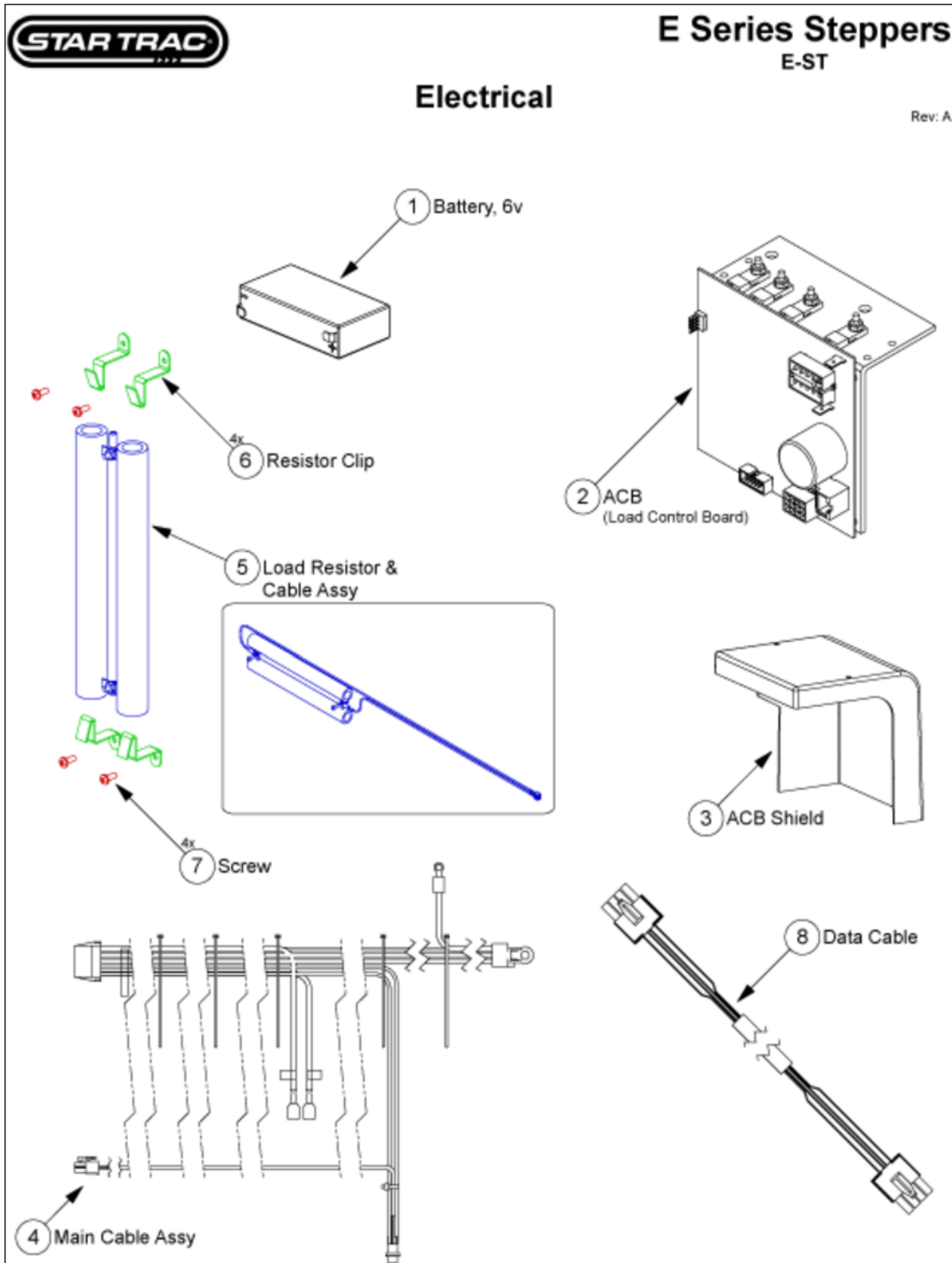
Callout	Part Number:	Description
1	800-3114	*ALT* USE PART # 711-0110-KT
2	800-0292	PULLEY, MAIN DRIVE ASSY
3	130-0401	BEARING, PILLOW BLOCK (ECC) 1"
4	020-0019	SPACER, MAIN DRIVE .91" LG
5	800-0299	*ALT* USE PART # 711-0110-KT
6	800-0300	*ALT* USE PART # 711-0110-KT
7	020-0018	SPACER, MAIN DRIVE .20" THK

Parts are subject to availability. Part pricing may change with or without notice.
Check the Star Trac Support Website <http://support.startrac.com> for current part pricing.

October 21, 2009

CARDIO • Stepper • E Series Stepper • E-ST

Electrical



Slide: 1-4-19-45 • PD ID: 1046 • PROD Link ID: 387 • D ID: 244

October 21, 2009

Electrical

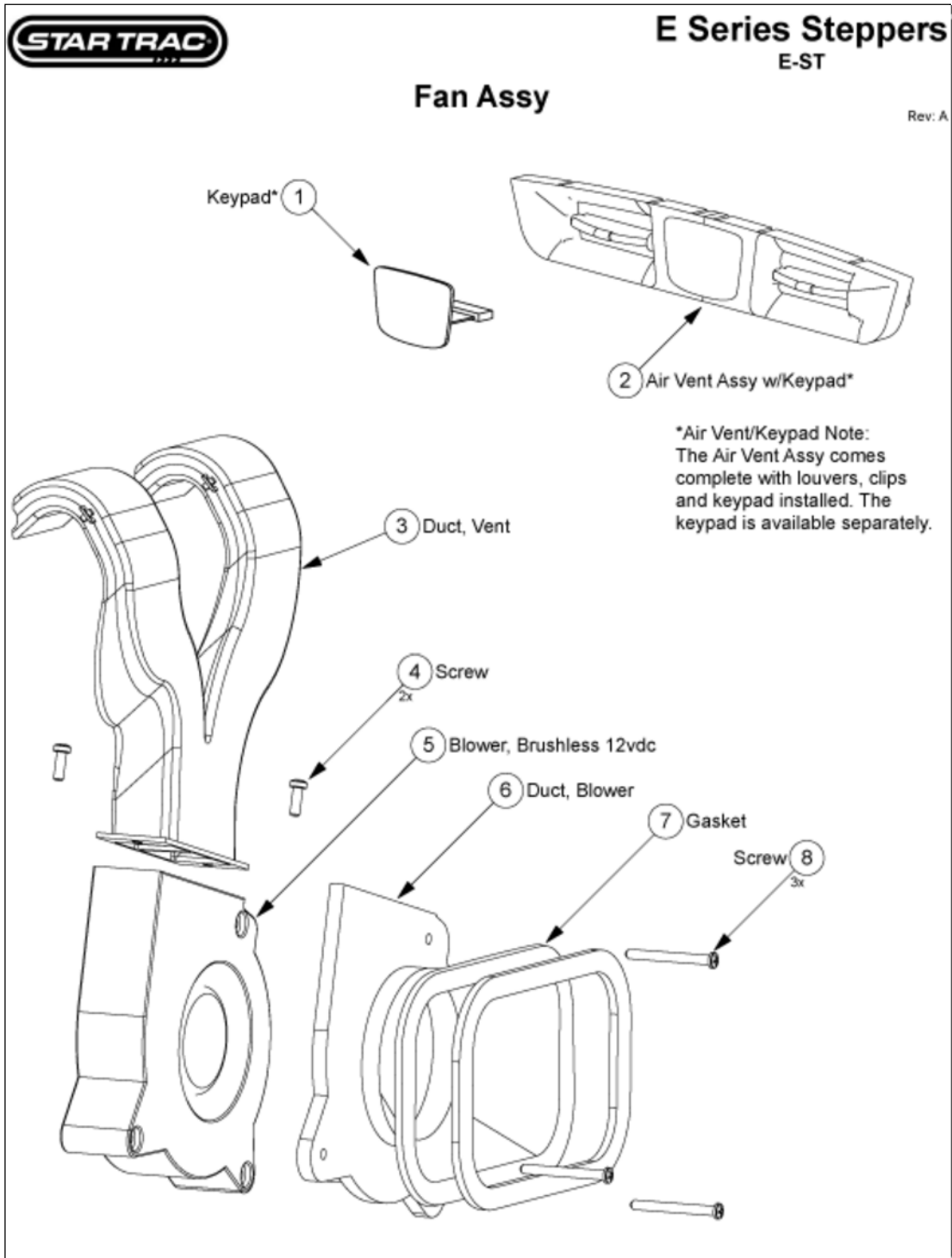
Callout	Part Number:	Description
1	800-3102	BATTERY, 6V, UB/RB/SC
2	711-3162	ASSY, LCB, STEPPER
3	020-6748	SHROUD, LEFT, STEPPER
4	711-3166	CABLE, ALT AND LCB, STEPPER
5	711-3167	CABLE, RESISTOR, STEPPER
6	170-0688	BRKT, RESISTOR MOUNT
7	110-3026	SCREW, 10-24X3/4" PHTCS
8	711-3185	ASSY, CABLE, INTERFACE, SC5100

Parts are subject to availability. Part pricing may change with or without notice.
Check the Star Trac Support Website <http://support.startrac.com> for current part pricing.

October 21, 2009

CARDIO • Stepper • E Series Stepper • E-ST

Fan Assy



Slide: 1-4-19-45 • PD ID: 1046 • PROD Link ID: 388 • D ID: 245

October 21, 2009

Fan Assy

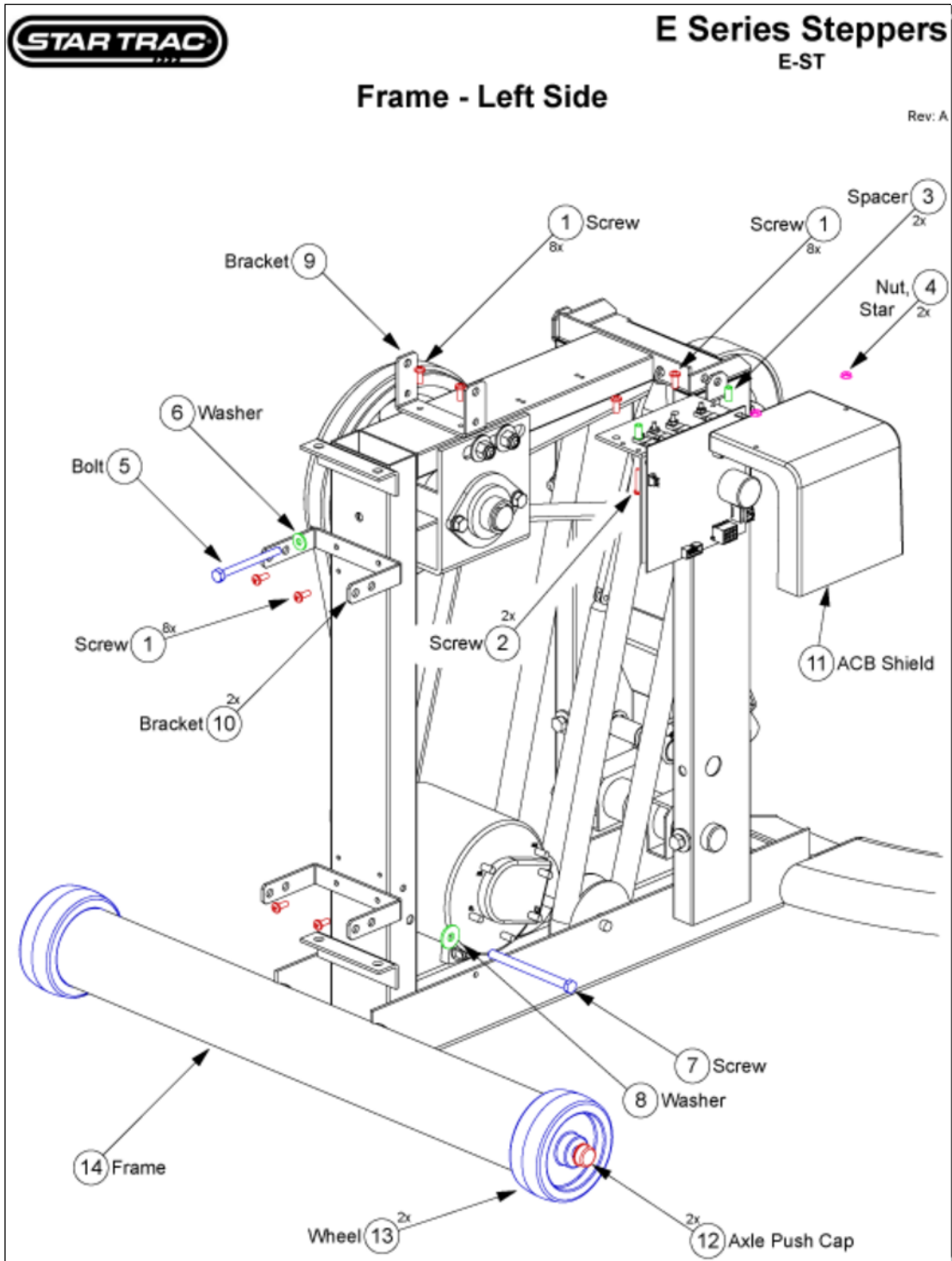
Callout	Part Number:	Description
1	050-2026	KEYPAD, FAN CONTROL
2	715-3651-KT	ASSY, AIR VENT, BCS, TV/R
3	020-7063	DUCT, VENT, BCS, LED, VLAD
4	110-3168	SCREW, M4X16 ISO7045
5	718-1122-KT	KIT, ASSY, FAN,UB/RB PRO
6	020-7067	DUCT, BLOWER, BCS, LED, VLAD
7	140-3396	GASKET, BCS BLOWER DUCT,
8	110-3403	SCREW, M4X0.7X40L,PHT, PH, CS,

Parts are subject to availability. Part pricing may change with or without notice.
Check the Star Trac Support Website <http://support.startrac.com> for current part pricing.

October 21, 2009

CARDIO • Stepper • E Series Stepper • E-ST

Frame Left Side



Frame Left Side

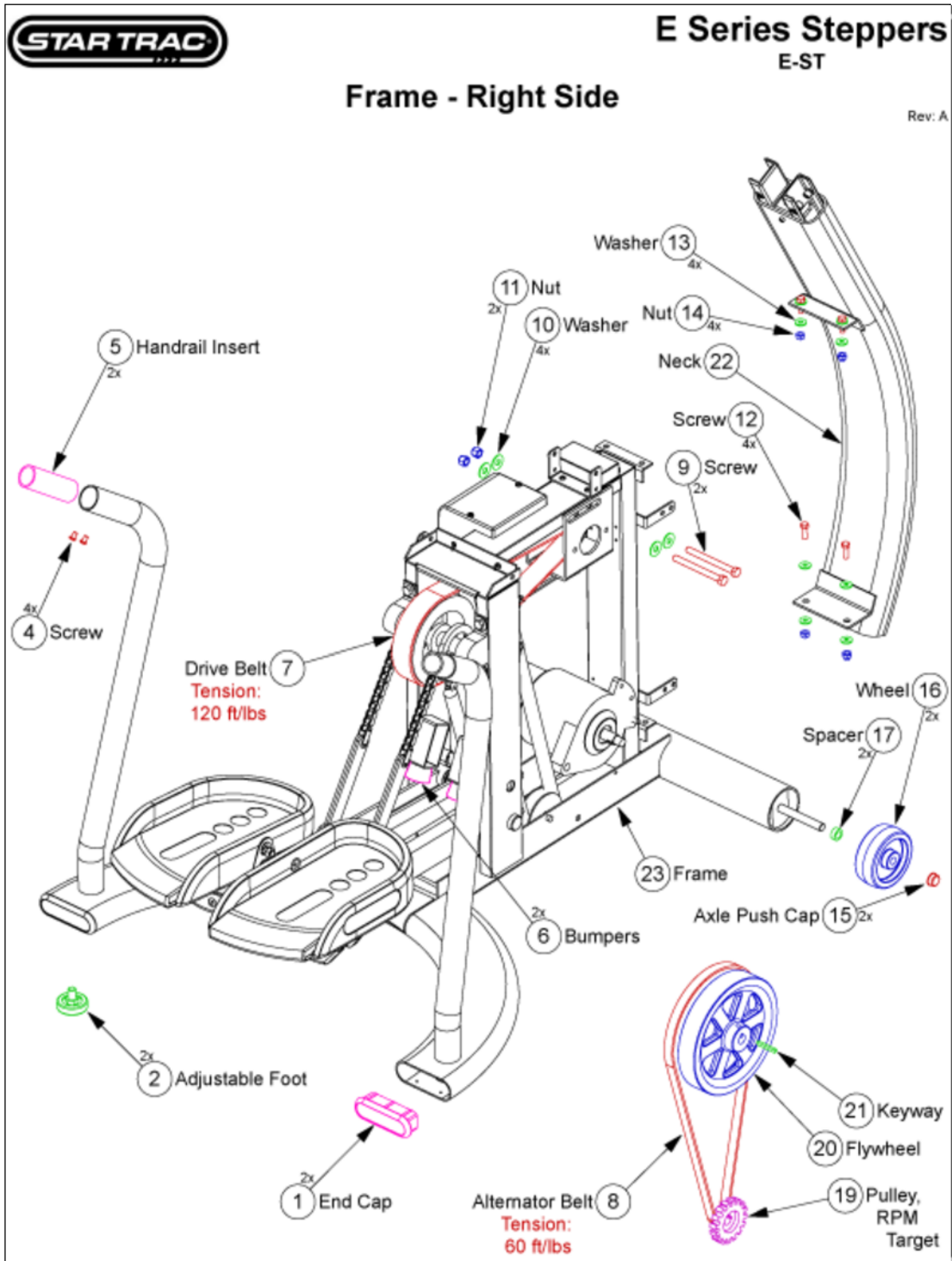
Callout	Part Number:	Description
1	110-3026	SCREW, 10-24X3/4" PHTCS
2	110-0280	SCREW, 6-32X7/8" PHM,SL,CS
3	120-0800	SPACER, RD,NYLON,6-32 X .5L
4	110-1740	NUT, 6-32 KEP
5	110-0501	SCREW, 1/4-20X3.25" HHCS
6	120-0410	WASHER, 1/4" FLAT
7	110-0652	BOLT, 5/16-18X4.0" HHCS
8	120-0480	WASHER, 5/16" CUT
9	020-6831	BRACKET, SHROUD MOUNT, STEP
10	020-6858	BRACKET, SHROUD, STEP-2
11	020-6748	SHROUD, LEFT, STEPPER
12	110-1415	AXLE PUSH CAP, 1/2"
13	130-1694	WHEEL, 4X1.5X1/2" BORE
14	710-1063	FRAME, PAINTED, BASE, STEP

Parts are subject to availability. Part pricing may change with or without notice.
Check the Star Trac Support Website <http://support.startrac.com> for current part pricing.

October 21, 2009

CARDIO • Stepper • E Series Stepper • E-ST

Frame Right Side



Frame Right Side

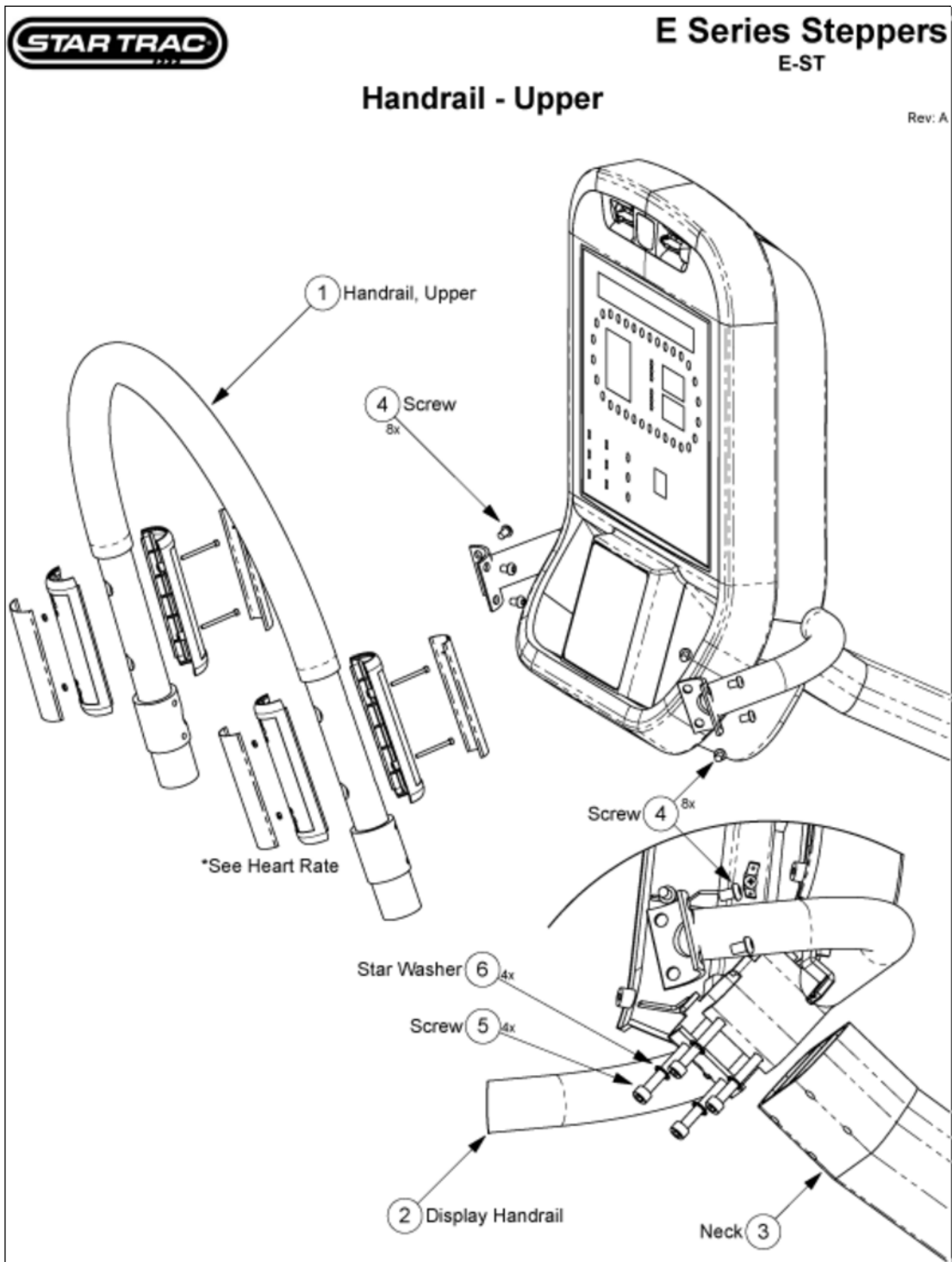
Callout	Part Number:	Description
1	140-3310	ENDCAP, STEP, BASE
2	140-3247	FOOT, ADJ/LEVEL
4	110-0506	SCREW, 1/4-28X3/8" BHSS
5	710-0521	INSERT, HRAIL
6	110-0358	<i>(Description not available)</i>
7	130-0122	BELT, DRIVE, 370J16, POLY-V
8	800-3121	BELT, 450J7, POLY-V
9	110-0601	SCREW, 3/8-16X4.0" HHCS
10	120-0463	WASHER, 3/8X1.0" FLAT
11	110-1830	NUT, 3/8-16 HEX, NYLOC
12	110-0570	*OBSOLETE*
13	120-0410	WASHER, 1/4" FLAT
14	110-3098	*OBSOLETE*
15	110-1415	AXLE PUSH CAP, 1/2"
16	130-1694	WHEEL, 4X1.5X1/2" BORE
17	020-4604	SPACER, 1/2X3/4X.31"
19	130-1302	PULLEY, ALT DRIVE, SS
20	020-0681	FLYWHEEL, 8" X 5/8"ID
21	110-1442	KEYWAY, 3/16X1.5" STEPPERS
22	711-3163	ASSY, BASE NECK, STEPPER
23	710-1063	FRAME, PAINTED, BASE, STEP

Parts are subject to availability. Part pricing may change with or without notice.
Check the Star Trac Support Website <http://support.startrac.com> for current part pricing.

October 21, 2009

CARDIO • Stepper • E Series Stepper • E-ST

Handrail Upper



Handrail Upper

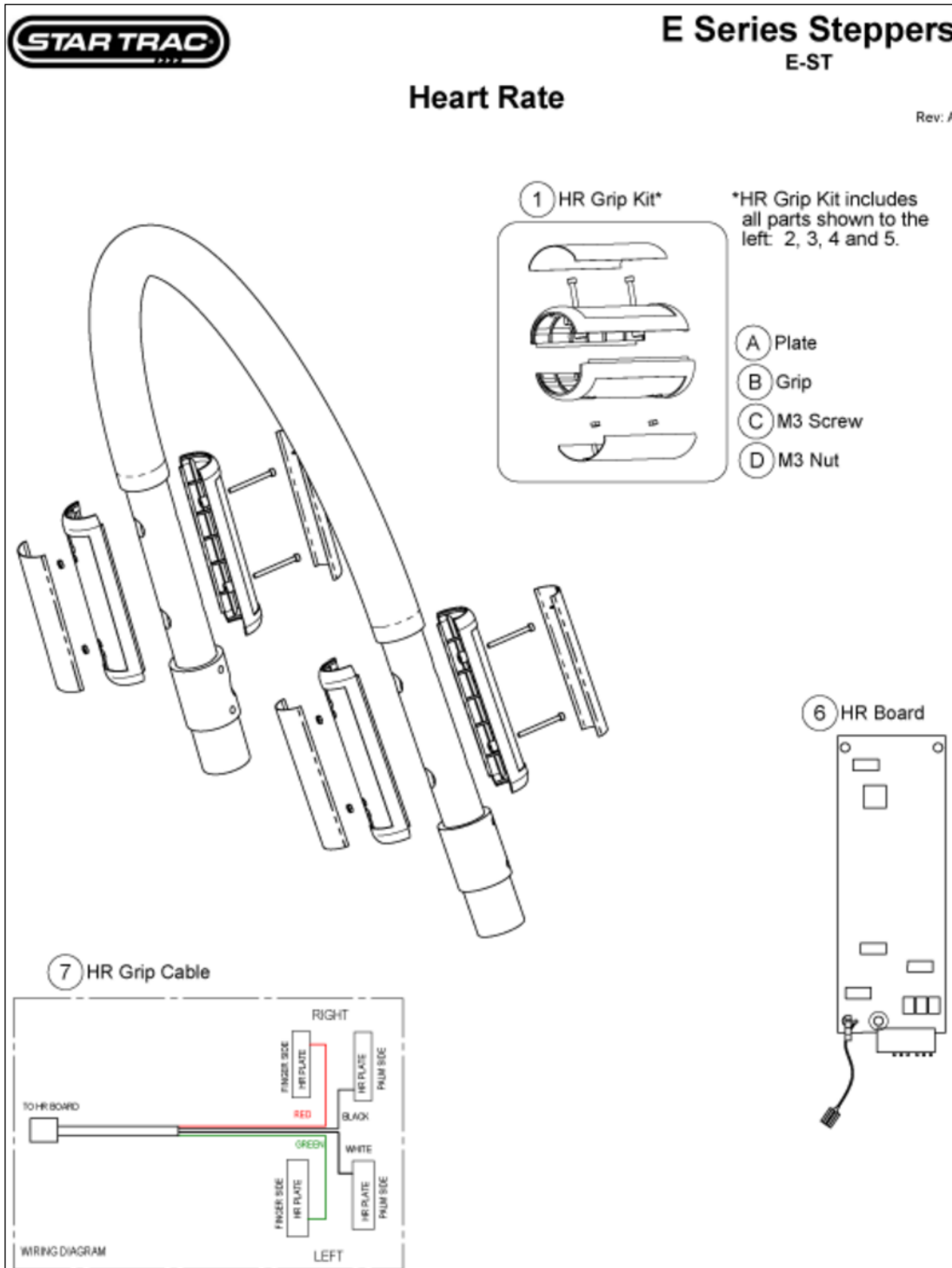
Callout	Part Number:	Description
1	710-1066-05	TUBE, TOP, DIPPED, STEPPER
2	711-3208	ASSY, DISP. WELD. W/HARDWARE,
3	711-3139-05	ASSY, STEP, FRONT, EXT, TOP
4	110-0506	SCREW, 1/4-28X3/8" BHSS
5	110-3169	SCREW, M6X65, SHC,HE,ISO4762
6	120-3257	WASHER, M6 TEETH

Parts are subject to availability. Part pricing may change with or without notice.
Check the Star Trac Support Website <http://support.startrac.com> for current part pricing.

October 21, 2009

CARDIO • Stepper • E Series Stepper • E-ST

Heart Rate



Slide: 1-4-19-45 • PD ID: 1046 • PROD Link ID: 391 • D ID: 248

October 21, 2009

Heart Rate

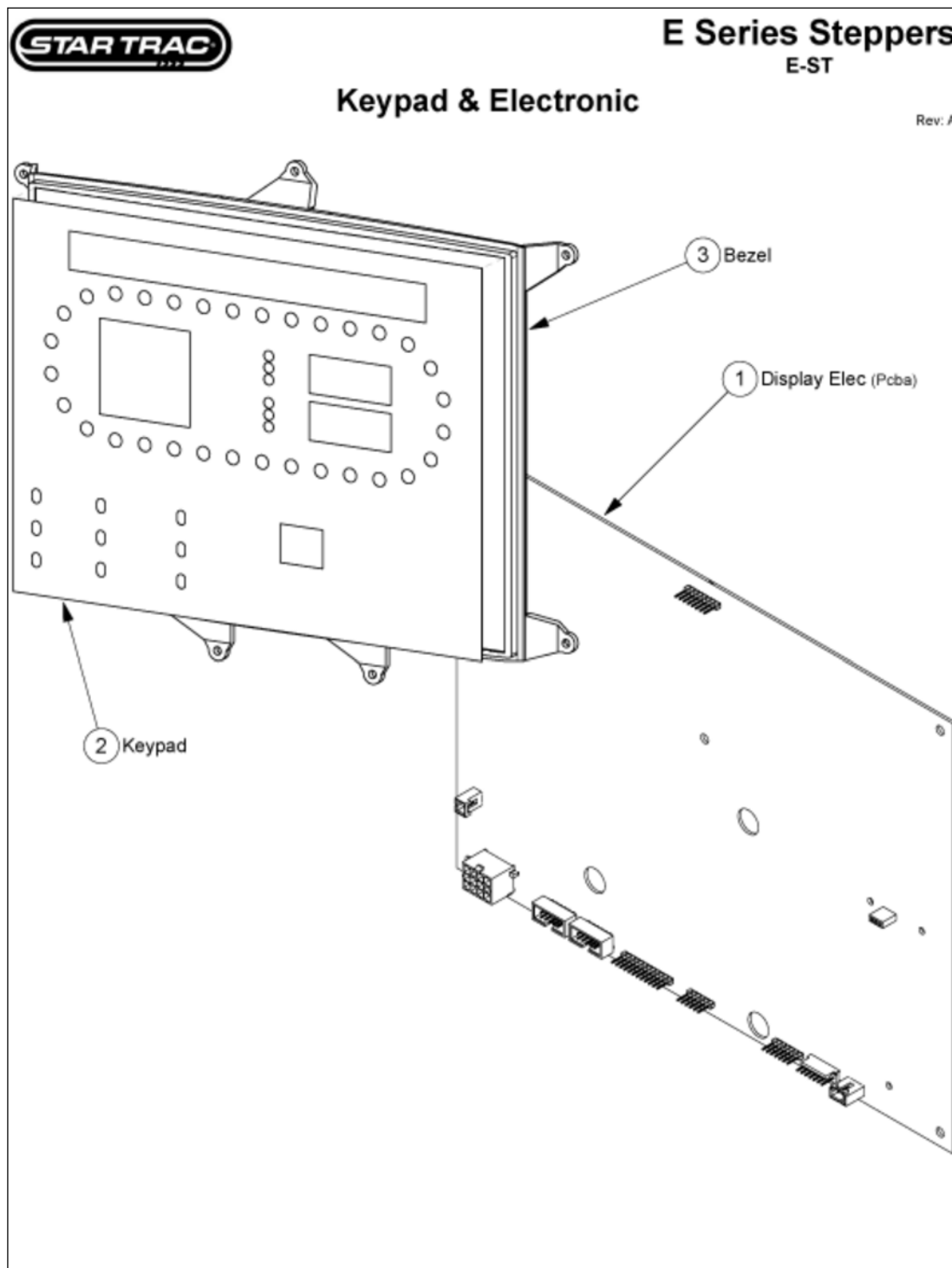
Callout	Part Number:	Description
1	800-3904	HR GRIP KIT, ONE SIDE
6	715-3670	PCBA, SALUTRON 6000, VLAD
7	711-3153	ASSY, HR GRIP CABLE, STEPPER

Parts are subject to availability. Part pricing may change with or without notice.
Check the Star Trac Support Website <http://support.startrac.com> for current part pricing.

October 21, 2009

CARDIO • Stepper • E Series Stepper • E-ST

Keypad & Electronic



Slide: 1-4-19-45 • PD ID: 1046 • PROD Link ID: 393 • D ID: 250

October 21, 2009

Keypad & Electronic

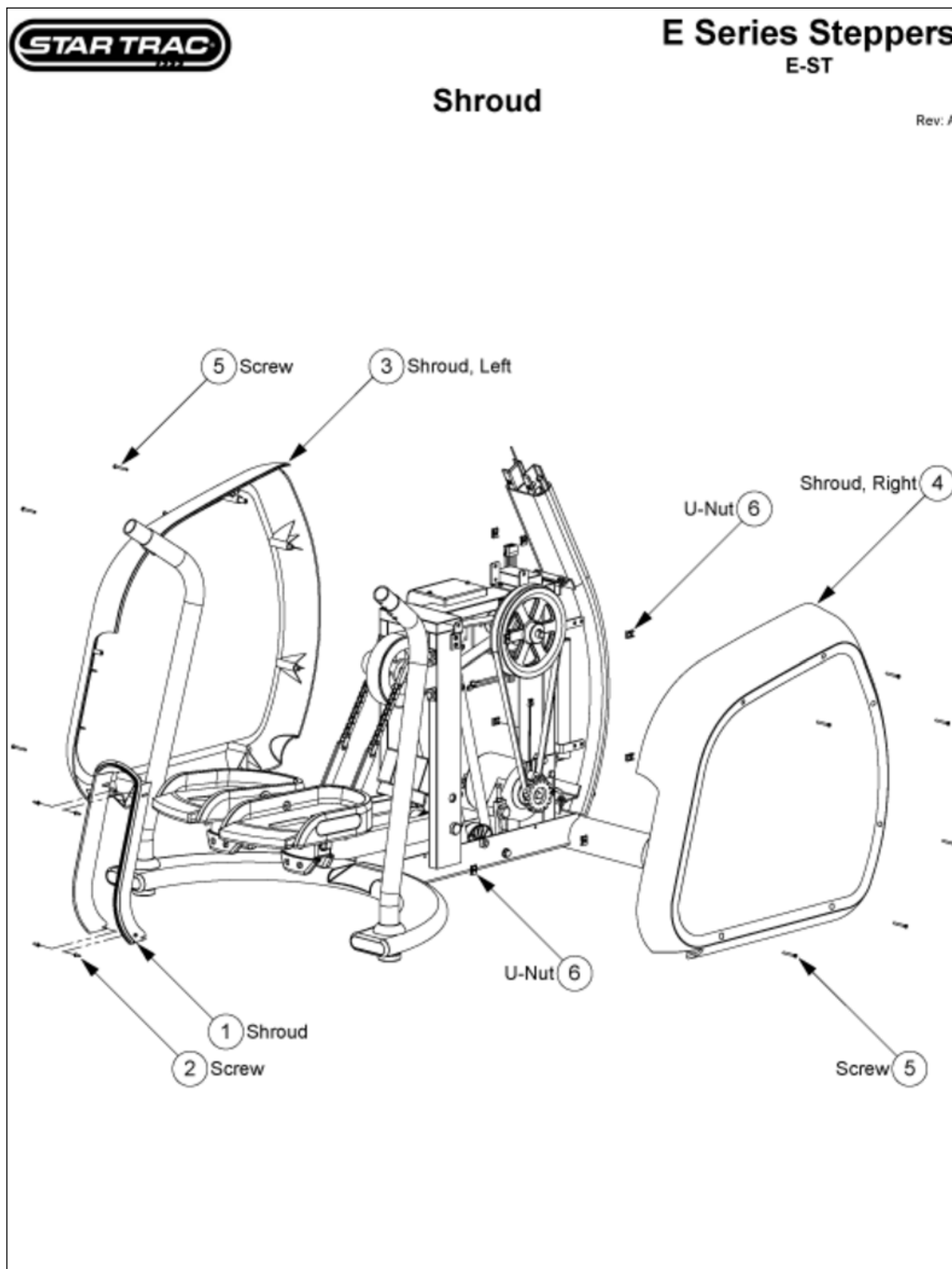
Callout	Part Number:	Description
1	718-5099	ASSY, DISP BOARD POPULATED,
2	050-2035	KEYPAD, MAIN, STEPPER
3	020-7061	BEZEL, MEMBRANE KEYPAD, VLAD

Parts are subject to availability. Part pricing may change with or without notice.
Check the Star Trac Support Website <http://support.startrac.com> for current part pricing.

October 21, 2009

CARDIO • Stepper • E Series Stepper • E-ST

Shrouds



Slide: 1-4-19-45 • PD ID: 1046 • PROD Link ID: 394 • D ID: 251

October 21, 2009

Shrouds

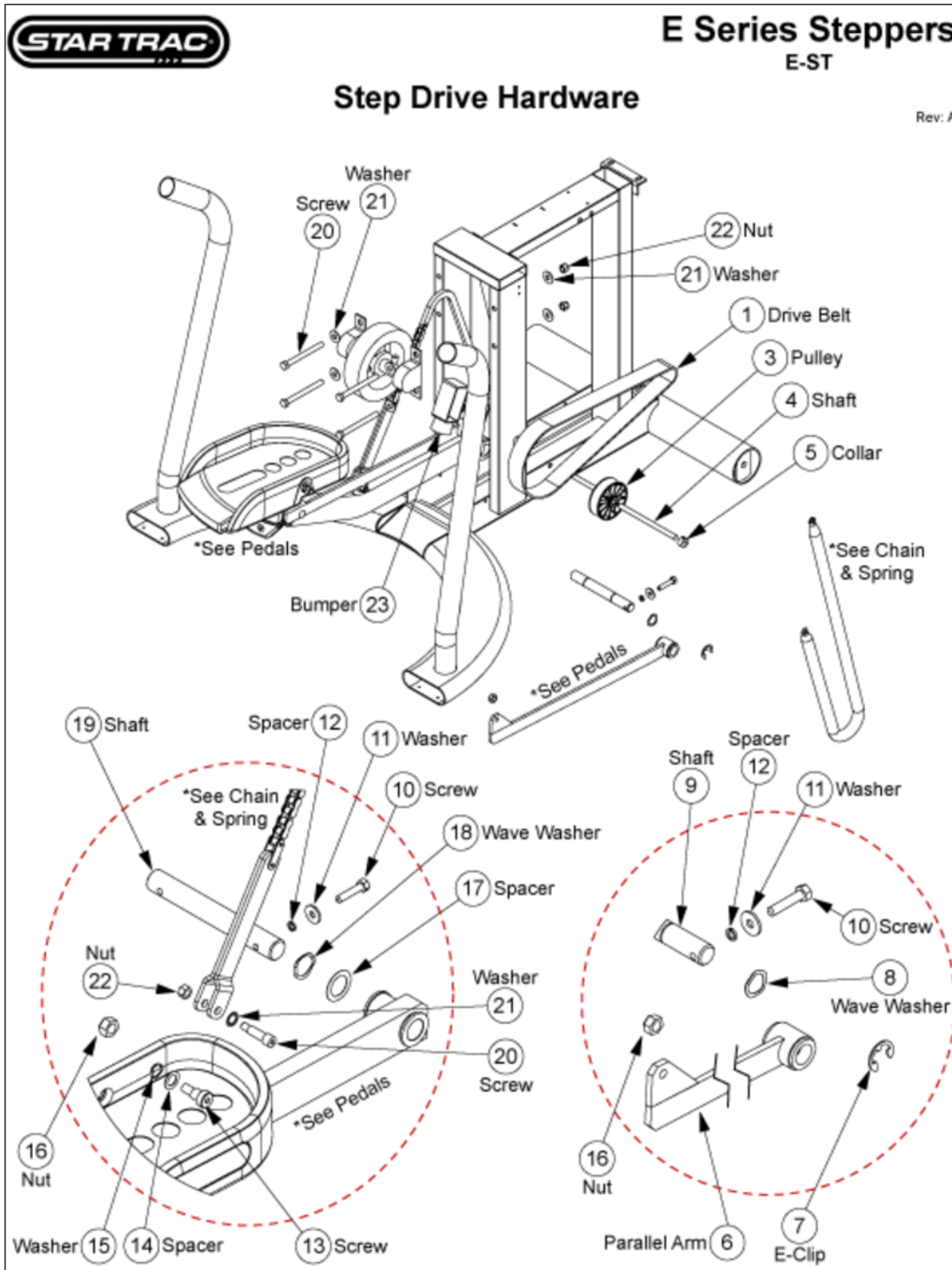
Callout	Part Number:	Description
1	020-6749	SHROUD, OPENING, STEPPER
2	110-3165	SCREW, M4X0.7X20L, PHT,PH,CS,ZI
3	711-3204-01	ASSY, SHROUD W/LABEL, STEP, LF
4	711-3204-02	ASSY, SHROUD W/LABEL, STEP, RT
5	110-0286	SCREW, #8-18X1-1/2,PHT-AB,PH
6	140-3323	U-NUT, #8, PANEL .025-.125

Parts are subject to availability. Part pricing may change with or without notice.
Check the Star Trac Support Website <http://support.startrac.com> for current part pricing.

October 21, 2009

CARDIO • Stepper • E Series Stepper • E-ST

Step Drive Hardware



Slide: 1-4-19-45 • PD ID: 1046 • PROD Link ID: 395 • D ID: 252

October 21, 2009

Step Drive Hardware

Callout	Part Number:	Description
1	130-0122	BELT, DRIVE, 370J16, POLY-V
3	130-1738	PULLEY, IDLER, SPRING, SC5100
4	020-6889-KT	KIT, SHAFT, 0.375" OD, 6.0"
5	130-0321	COLLAR SHAFT, 3/8"ID W/SET SCREW
6	711-3181-KT	STEPPER, ASSY, PARALLEL, ARM
7	140-0940	E-CLIP 3/4"
8	120-0505	WASHER, 3/4"ID
9	020-2116	SHAFT, PARALLEL ARM 3/4"
10	110-0603	SCREW, 5/16-8X1.5"
11	120-0480	WASHER, 5/16" CUT
12	120-0496	WASHER, 5/16" LOCK
13	110-0711	BOLT, 1/2X1/2" SH
14	120-0493	WASHER, 1/2X3/4" FLAT
15	120-3011	WASHER, .58ODX.73IDX.009, WAVE
16	110-3059	NUT, 3/8-16 CENTERLOCK
17	120-0411	WASHER, 1.0"
18	120-0510	WASHER, 1.0"
19	020-2120	SHAFT, MAIN, LOWER ARM 1"X7.5"
20	110-0601	SCREW, 3/8-16X4.0" HHCS
21	120-0463	WASHER, 3/8X1.0" FLAT
22	110-1830	NUT, 3/8-16 HEX, NYLOC
23	140-0358	BUMPER, CONICAL, ARM RTRN STOP

Parts are subject to availability. Part pricing may change with or without notice.
Check the Star Trac Support Website <http://support.startrac.com> for current part pricing.

October 21, 2009